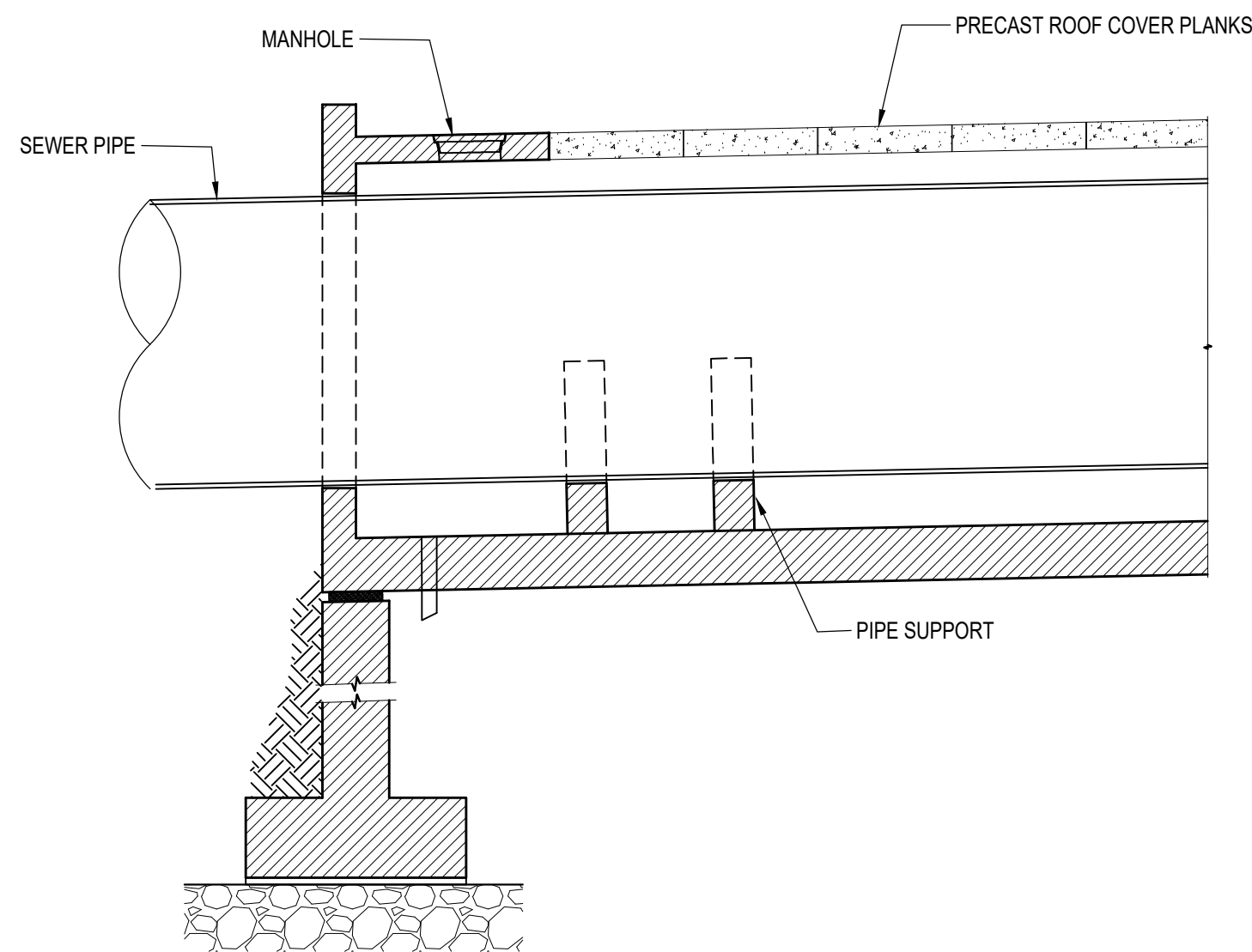
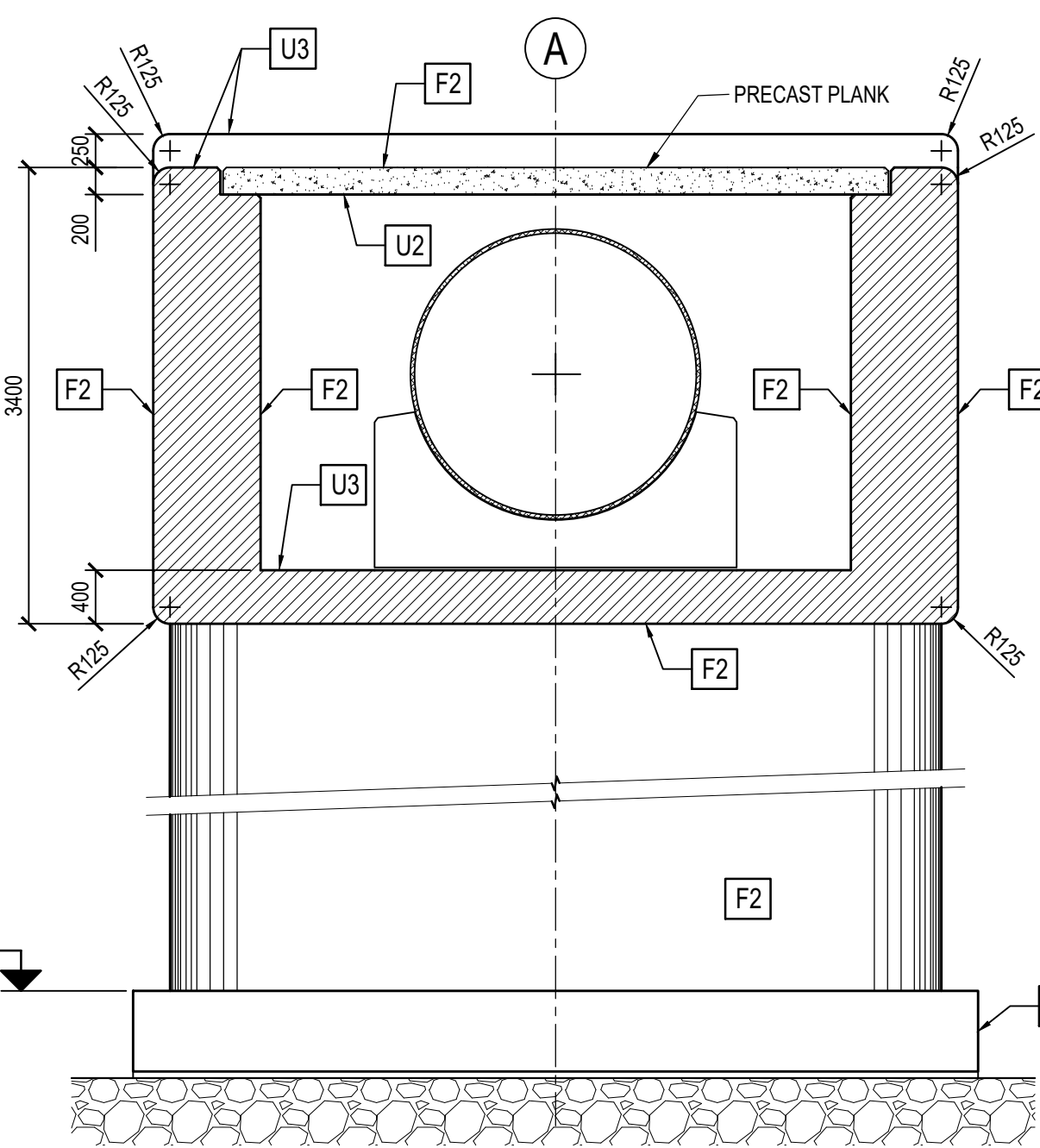


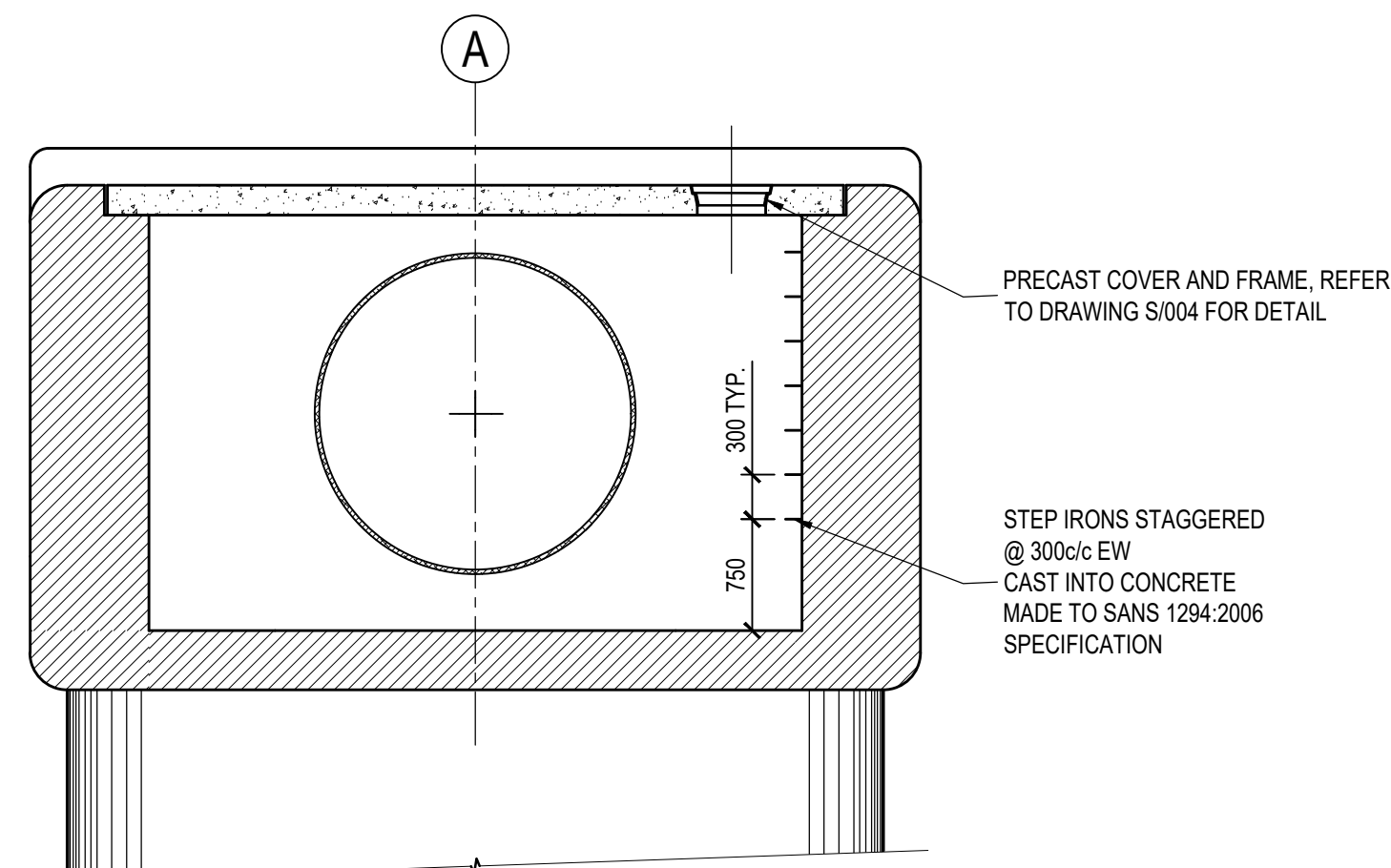
SECTION A  
SCALE 1:50



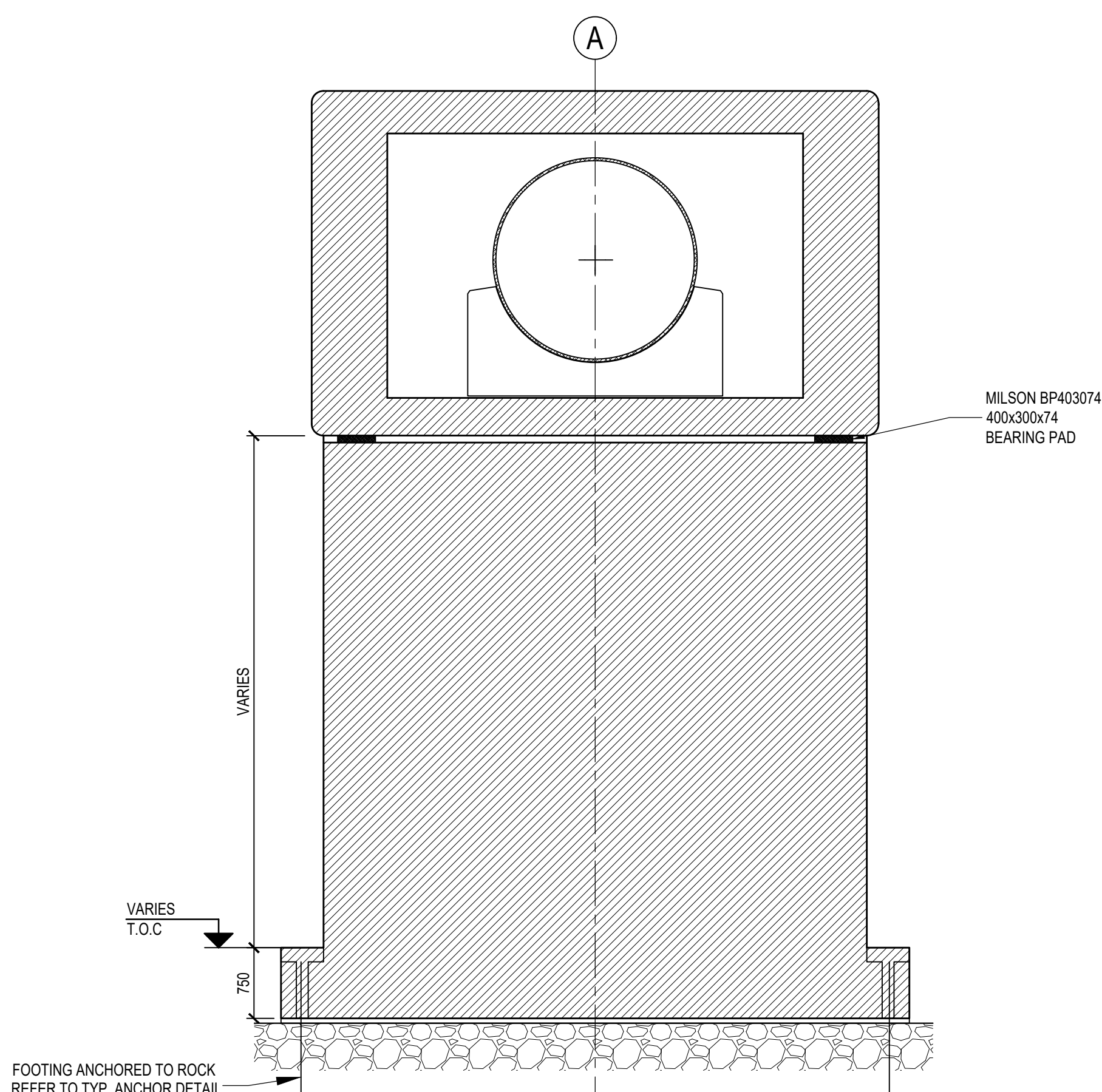
SECTION B  
SCALE 1:50



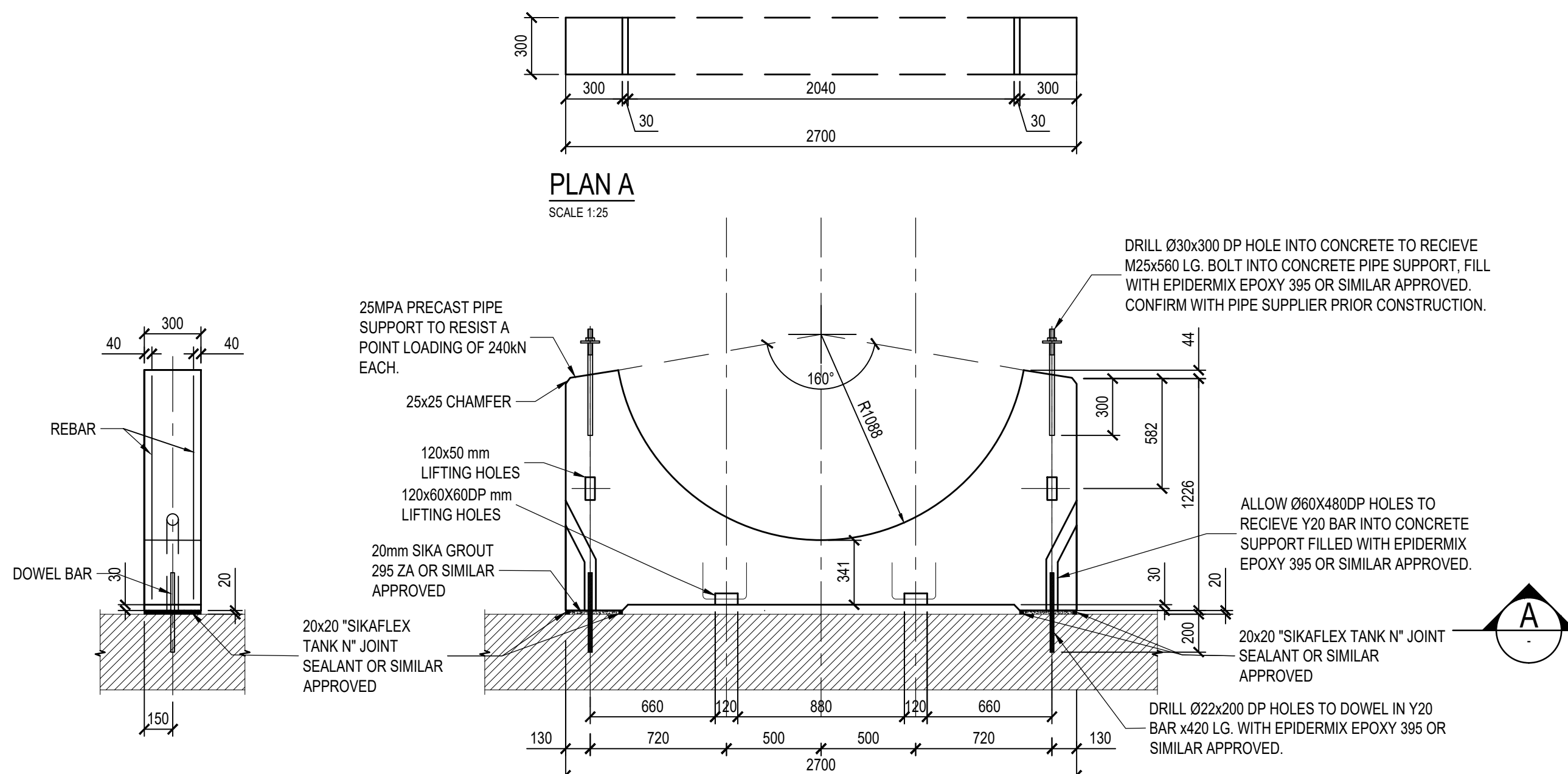
SECTION C  
SCALE 1:50  
TYPICAL FINISHES



TYP. DECK ACCESS DETAIL  
SCALE 1:50



TYPICAL SECTION THROUGH SUPPORT  
SCALE 1:50

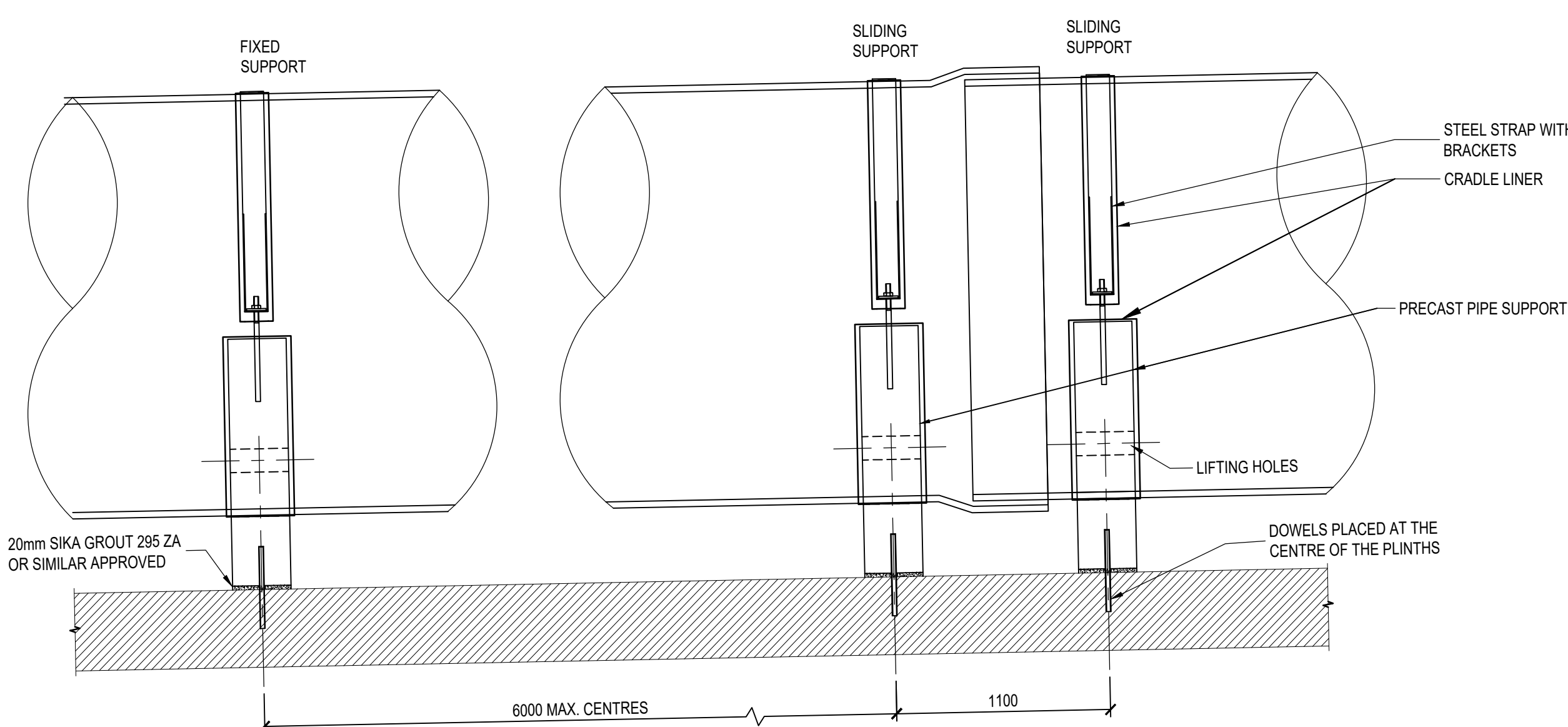


PLAN A  
SCALE 1:25

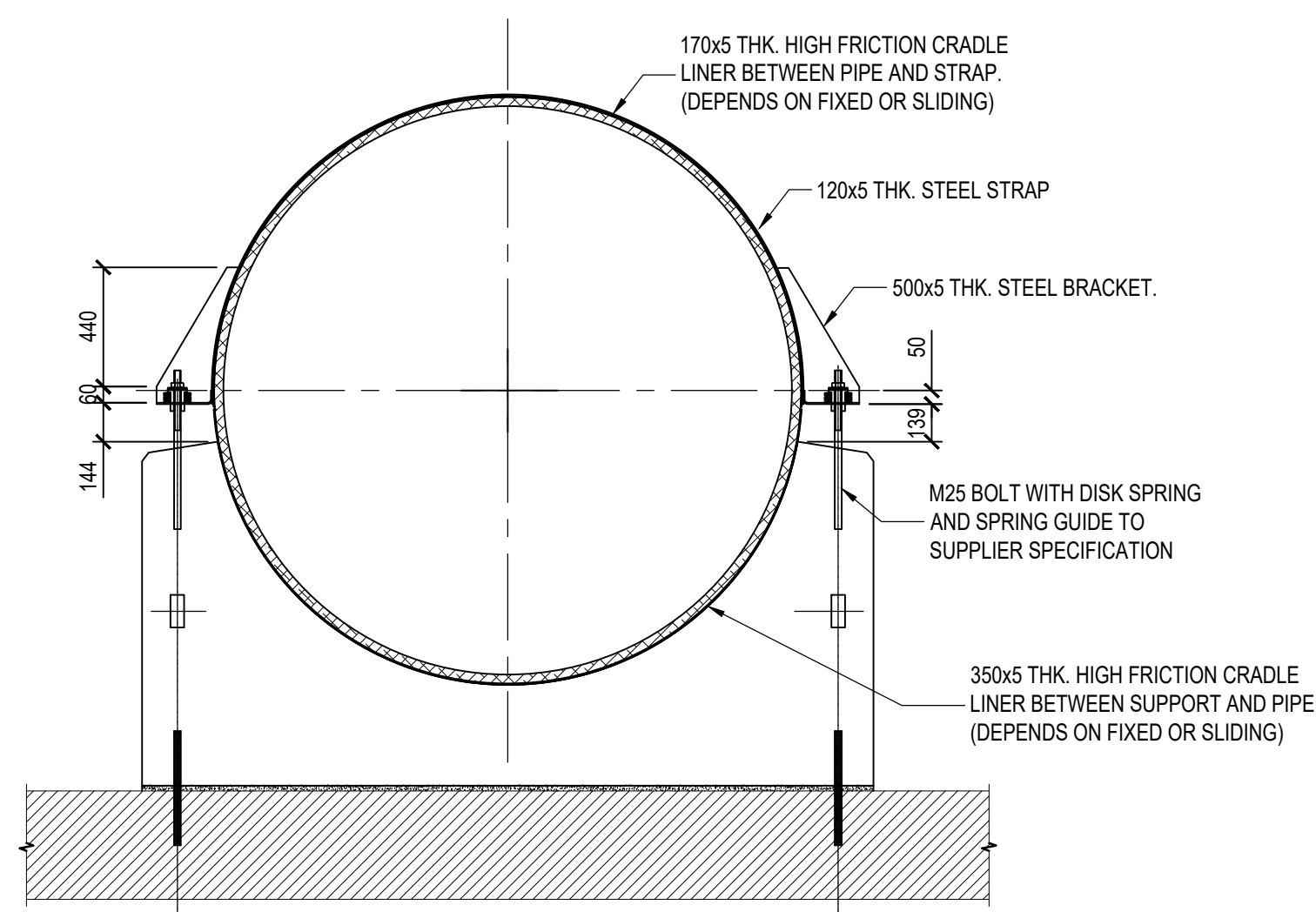
ELEVATION  
SCALE 1:25

SECTION  
SCALE 1:25

TYPICAL PIPE SUPPORT DETAIL  
SCALE 1:25



ELEVATION  
SCALE 1:25



SECTION-FIXED SUPPORT  
SCALE 1:25

TYP. PIPE FIXING TO CONCRETE SUPPORT DETAIL  
SCALE 1:25

- NOTE:
- SUPPORT ARRANGEMENTS, JOINING, ANCHORS, GUIDES, CLAMPS AND SUPPORT SPACING TO PIPE SUPPLIER SPECIFICATION.
  - CONTRACTOR TO CONFIRM WITH PIPE SUPPLIER PRIOR CONSTRUCTION AND INSTALLATION COMMENCEMENT.

#### NOTES: REINFORCED CONCRETE

- THE APPLICABLE STANDARD SPECIFICATION IS SANS 12006 - 1982 WHICH SHOULD BE READ IN CONJUNCTION WITH THE VARIATIONS AND ADDITIONS CONTAINED IN THE MBM PROJECT SPECIFICATION FOR CONCRETE (STRUCTURAL).
- CONCRETE COVER TO REINFORCEMENT AND CONCRETE STRENGTH TO BE AS INDICATED BELOW. COVER IS GIVEN TO THE NEAREST FACE. MINIMUM BAR COVER TO BE MAXIMUM OF BAR DIAMETER AND AS SHOWN BELOW. SPECIFIED COVER TO BE MAINTAINED USING GEMENT MORTAR COVER BLOCKS OR APPROVED PLASTIC SPACERS.
- ALL AGGREGATE TO BE 19mm UNLESS OTHERWISE SPECIFIED.
- CONCRETE DESIGN MIXES TO BE SUBMITTED TO ENGINEER FOR COMMENTS PRIOR TO CONSTRUCTION.
- CUBE TESTS TO BE CARRIED OUT ON SITE AND LOGGED WITH POSITION AND DATE. CUBES TO BE TAKEN FOR EACH TYPE OF ELEMENT, AT LEAST ONE SET DAILY AND AT LEAST ONE SET EVERY 50m<sup>3</sup>.
- REINFORCEMENT TO BE IN ACCORDANCE WITH SANS 820 AND SHALL BE BENT IN ACCORDANCE WITH SANS 820.
- ALL CAST IN ITEMS SHALL BE FREE OF OIL, GREASE, DIRT OR ANY OTHER MATERIAL WHICH MAY IMPAIR THE BOND WITH THE CONCRETE. CONTRACTOR TO REFER TO ARCHITECT SPECIALIST DRAWINGS FOR DETAILS POSITIONS OF OPENINGS, SLEEVES, CONDUITS, ETC. FOR STORMWATER, SEWERAGE AND OTHER SERVICES.
- FOUNDATIONS HAVE BEEN DESIGNED FOR AN ALLOWABLE GROUND BEARING CAPACITY OF 1000 kPa.
- ALL FOUNDATION EXCAVATIONS TO BE INSPECTED BY THE GEOTECHNICAL ENGINEER PRIOR TO CONCRETING.
- REMOVAL OF FORMWORK TO BE IN ACCORDANCE WITH THE PROJECT SPECIFICATION. IT IS THE CONTRACTOR'S RESPONSIBILITY FOR BACK-PROPPING ON MULTI-STORY SLAB CONSTRUCTION.
- ALL EXPOSED CORNERS TO BE CHAMFERED 25x25 O.U.N.

ELEMENT	CONCRETE STRENGTH AT 28 DAYS (MPa)	COVER mm
FOUNDATIONS	30	50
COLUMNS	30	45
BEAMS	30	45
SLABS	30	45
WALLS	30	45
-	40	30

#### CONSULTANTS DWG NO

13247-02/S/003/A

#### DRAWING No.

JW14455

PROJECT No.

DRAWING No.

REV.

A0

SHEET

3

OF

4

ORIGINAL PAGE SIZE

FILE No.

#### SURVEY INFORMATION

PROJECT SURVEYOR:

DATE:

CCTV COMPANY:

DATE:

#### APPROVAL BY JW DEPOT

CHECKED

APPROVED BY:

SIGNATURE

DATE

#### SCALE

AS SHOWN

REV:

A

DATE

#### AMENDMENTS

DESCRIPTION

DATE

ISSUED FOR TENDER

30/09/2024